

An appreciation of handmade and homegrown...

DOWN A QUIET COUNTRY ROAD
and off the beaten path outside the
town of Fennville, is a large selection
of quality handmade pottery and fine
craft.

Khnemu Studio LLC is
the working studio of
resident artist, Dawn
Soltysiak and a Michigan
artisan, handmade pottery
and fine craft gallery.



The studio and gallery are located
in a restored historic barn on the
1890's Fernwood Farm Estate.

Treat yourself to the collective
energy of work created by
accomplished artists.

Check out our list of special events and pottery
classes or workshops instructed by knowledgeable
and skilled artisans in a professionally equipped
studio.



Kendra McKimmy

Visit the quaint seasonal
on-site farm stand.

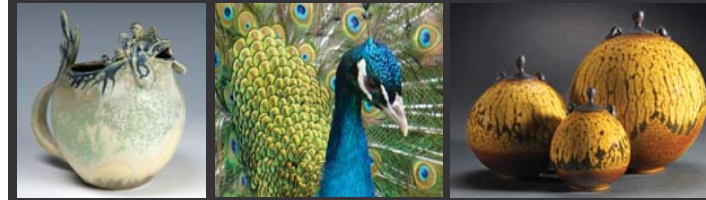
Experience the beauty
of the resident farm
animals including
peacocks, horses, llama,
grass-fed cattle and
free-range domestic
and exotic chickens.



6322 113th Ave., Fennville MI 49408
www.KhnemuStudio.com

What is Khnemu and how do you pronounce it?

(Kah-nem-oo, and yes you say the K)
In Egyptian mythology Khnemu was the god of creation, arts and craft
and fertility. It was believed by the ancients that Khnemu fashioned
man and the gods on his potter's wheel. "Khnemu" literally means molder
or sculptor. He is represented in hieroglyphics as the ram-headed god.
Khnemu Studio on Fernwood Farm is a place of fertility & creation, where
one-of-a-kind vessels are molded and sculpted on the potter's wheel.



Khnemu Studio

ON FERNWOOD FARM

2012 Exhibit & Event guide to excellence
in hand-made pottery and fine craft



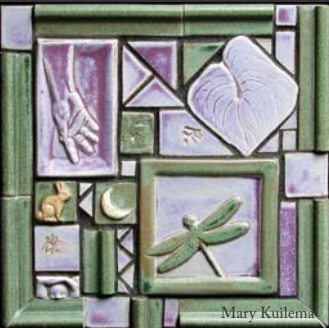
www.KhnemuStudio.com
Located between South Haven & Saugatuck



Dawn Soltysiak



Linda & Baby



Mary Kuilema



Heidi Fahrenbacher



Bliss & Pumpkins



Rita Shields

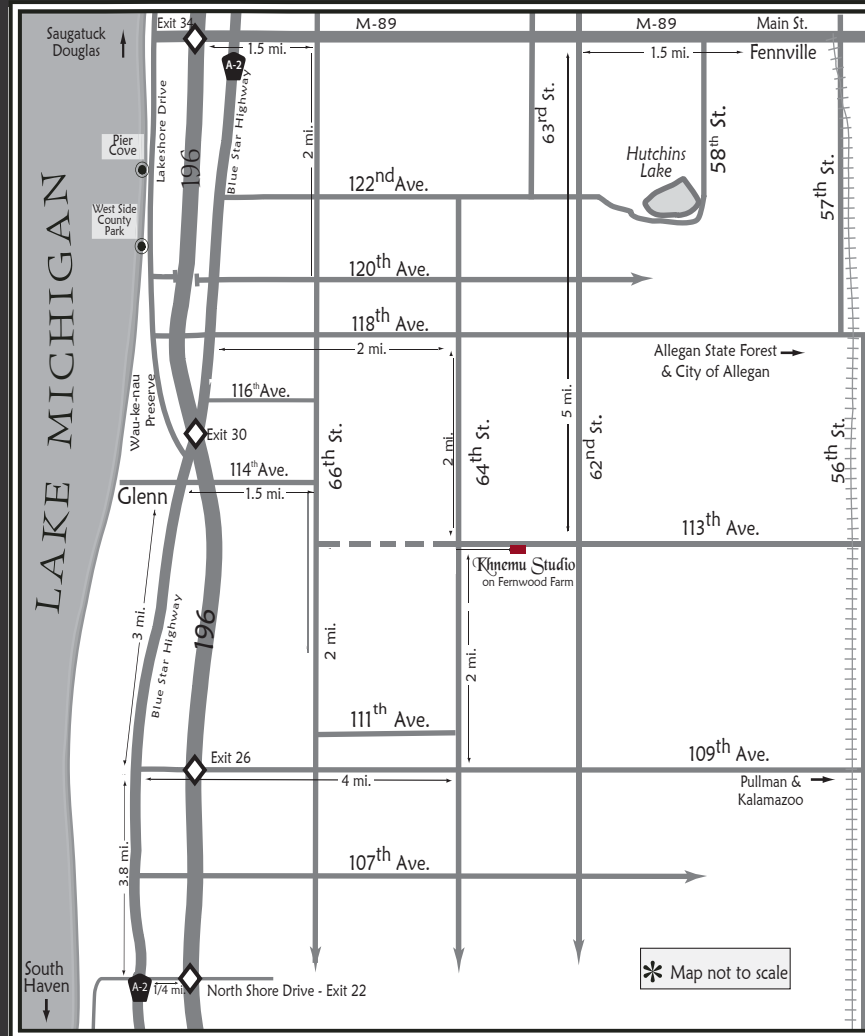


Judy Geerts



Khnemu Studio

...a connection to the artist and the land



Dawn Soltysiak

2012 Seasonal Hours

April-November
Wed-Sun 10 - 5

Open Labor & Memorial Day
and full week of the 4th of July

Open year around or additional
hours by appointment

Directions

(Note: the bridge is down on 113th Ave,
between 64th & 66th. Please note revised
directions and/or look for detour signs.)

From Grand Rapids, Holland
and Saugatuck/Douglas
Take Exit 34 (M-89) off I-196.
East to Blue Star Hwy, South
to 118th, East to 64th, South
to 113th and East to studio
(Approx 1 hr from GR)

From Chicago or South Haven
Take Exit 26 (109th Ave) off
I-196, East to 64th St, North
to 113th Ave East to studio
(Approx 2.5 hrs from Chicago)

From Detroit or Kalamazoo
I-94 West to US-131 North to
M-43 West to M-40, North to M-89
West to 62nd Ave, South to 113th Ave
West to studio (Approx 1 hr
from Kalamazoo)

Khnemu Studio LLC

6322 113th Ave, Fennville MI 49408

(269)236-9260 dawn@khnemustudio.com

www.KhnemuStudio.com

www.FernwoodFarmEstate.com

Member studio of www.BlueCoastArtists.com

Member farm of www.LakeshoreHarvestCountry.com



2012 Seasonal Hours:

April-November
Wed-Sun 10 - 5

Open Labor & Memorial Day
and full week of the 4th of July

Open year around or additional hours by appointment

Visit www.khnemustudio.com for additional events or information about pottery classes.

Thank you for your interest in hand-made contemporary ceramics and fine craft. If you have an appreciation of home grown and hand made, I encourage you to visit in person.

Resident Artist
Dawn Soltysiak



Radical Paperclay Workshop with Graham Hay, Australia

Don't miss this opportunity of Graham in the USA

Dates: June 16 - 17

Time: Sat - Sun 10 - 4

\$150 Limited to 15 participants

A hands-on, fun, information packed workshop from a paperclay expert. Paperclay is any clay to which cellulose has been added. All traditional, and now radical, techniques can be used; pieces can be worked on, added to or removed, at any stage. This includes dry-to-dry joins, wet-to-dry joins! Learn about "dip and stick", foodclay, speed firing, rough throwing, non firing, non glaze decoration and many more techniques. Gain a complete understanding of paperclay. Techniques will be illustrated, then demonstrated to you step by step, with plenty of time to have a go yourself, with expert support. Create detailed and expressive paperclay sculptures while discovering its unique energy, resources and time saving properties. Graham has a well deserved reputation for highly informative, but fun workshops. Space is limited, reservations required. \$75 non-refundable registration fee and remainder due 30 days prior to event. Contact studio for reservations



23rd Annual Blue Coast Artists Fall Tour of Studios



Dates: October 6 -7

Time: Sat-Sun 10 - 6

The Blue Coast Artists have been delighting and educating the public with their annual Fall Tour of Studios. Free of charge, viewers are invited to experience the creative process in action once again.

This creative experience is fun for the whole family. Tour all member studios during a crisp Fall weekend and be treated to complimentary refreshments and art-making demonstrations. www.bluecoartists.com

Khnemu Studio will demonstrate Raku firing and throwing on the potter's wheel.

Enjoy a Fall Festival of hand made and homegrown at the studio and on the farm!



5th Annual Lakeshore Harvest Country Family Farm Fest

Date: Saturday, July 28

Time: 10 - 6

Visit all the Lakeshore Harvest Country farms on this special day for families. Play games, pick fresh fruit, learn about animals and experience farm life in this hands-on celebration of country living!

Khnemu Studio on Fernwood Farm will have the following activities: chickens hatching, make & take craft table, pottery demonstrations and games!



Handles, Lids, Production - Tips, Tools, and Techniques with Chris Trabka

Hands-on Workshop Oct 13 - 14

Time: Sat - Sun 10 - 5

Cost \$80 per person, materials included
Reservations required-space is limited

Special Showing Oct 4 - 30

Open Wed-Sun 10 - 5, or by appointment



This hands-on workshop will focus on how to create consistent forms using handbuilding and throwing methods. Demonstrations will show how tools (hand-made and purchased) are used to create consistent shapes, how to create lids that fit, and how to create consistent handles. Participants will see all the steps of creating a form, and discussions will include glazing and firing. Participants will learn hands-on techniques while creating a set of mugs; on the first day: the body of the mugs and the handles; on the second day; mugs will be assembled. Contact studio for reservations. \$40 non-refundable deposit, remainder due 30 days prior to event.

Pit & Smoke Firing Workshop

Instructor: Dawn Soltysiak

Dates: Sat-Sun

May 19-20

Time: 10 til complete

\$100 per person

Reservations required

Experience hands-on the primitive firing techniques of pit firing and smoke firing. Learn to achieve the best color and tips on how to avoid disaster. Participants are allowed to bring up to 10 bisque fired pots to fire during this workshop.



Classic Organic by Brian Beam

Special Showing: June 27 - Jul 31

Open Wed-Sun 10 - 5 or by appointment

Nature is his source of inspiration. As a child, he spent all his free time in the outdoors fishing and hunting. The smell of wet leaves and the damp earth are revisited each time he opens a bag of clay. Brian's childhood memories along with his adult activities of today are the inspiration for his elegant artwork.



Animals in Clay by Sarah Hubbard

Special Showing: Aug 1 - Sept 2

Open Wed-Sun 10 - 5 or by appointment



Back by popular demand, Sarah's work will be available in the gallery for August only.

Her fun and whimsy work is inspired by her love of animals, and by her interest in Mexican folk-art and other artistic traditions that have a close link to nature.

Gourd-geous Pottery by Theresa Slaughter

Special Showing: Sept 5 - 30

Open Wed-Sun 10 - 5 or by appointment



Theresa's work is perfect for the Autumn harvest season.

Her passion for clay shows in her array of techniques and styles. Theresa's gourd shaped functional line has everything you need to serve your own harvest dinner.